

SPARK-LINE-233mH-375mH FAIT2219 SERIES



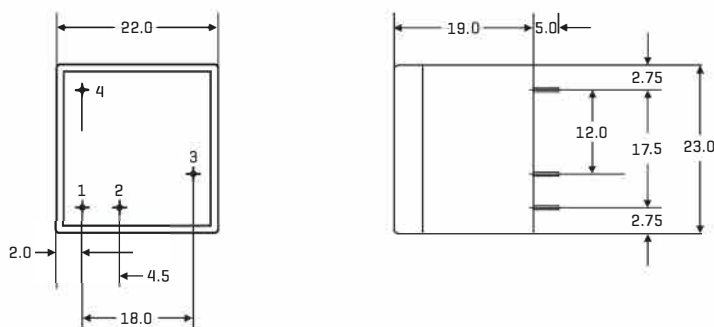
FEATURES

- Compact Design
- Available up to 23kV
- Ambient Temperature 70 °C
- Weight: 0.018kg
- Packaging unit: 55 pieces [tray]

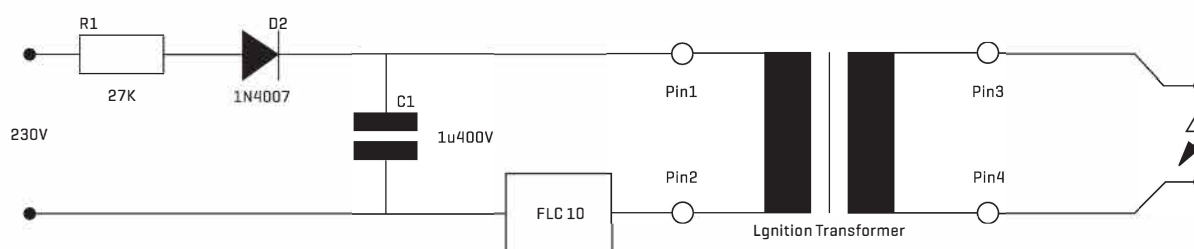
ELECTRICAL CHARACTERISTICS AT 25°C

Part Number	Primary Resistance [±10%] [Pin 1-2]	Secondary Resistance [±10%] [Pin 3-4]	Primary Inductance [±15%] [Pin 1-2]	Secondary Inductance [±15%] [Pin 3-4]	Winding Ratio	Secondary Voltage @ load 30pF	Ambient Temperature	No-Load Operation [MAX]
FAIT2219-200	26mΩ	520Ω	6μH	240mH	1:200	>20kV	70°C	30s
FAIT2219-256	26mΩ	786Ω	6μH	375mH	1:256	>20kV	70°C	30s
FAIT2219-175	59mΩ	822Ω	12μH	340mH	1:175	>23kV	70°C	30s
FAIT2219-150	59mΩ	590Ω	12μH	233mH	1:150	>23kV	70°C	30s

PHYSICAL CHARACTERISTICS



TECHNICAL INFORMATION



SPARK-LINE-SECONDARY EXTERNAL(1X) FAIT3523 SERIES



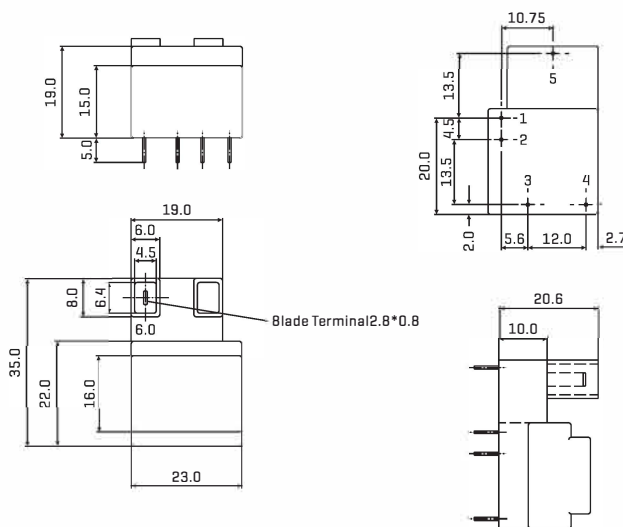
FEATURES

- Compact Design
- Available up to 22kV
- Ambient Temperature 70°C
- Weight: 0.019kg
- Packaging unit: 45 pieces [tray]

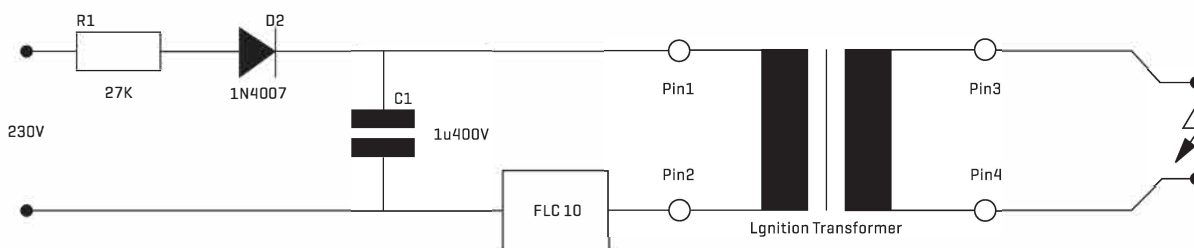
ELECTRICAL CHARACTERISTICS AT 25°C

Part Number	Primary Resistance [±10%] [Pin 1-2]	Secondary Resistance [±10%] [Pin 3-4]	Primary Inductance [±15%] [Pin 1-2]	Secondary Inductance [±15%] [Pin 3-4]	Winding Ratio	Secondary Voltage @ load 30pF >22kV	Ambient Temperature 70°C	No-Load Operation [MAX] 30s
FAIT3523-200	26mΩ	520Ω	6μH	240mH	1:200	>22kV	70°C	30s

PHYSICAL CHARACTERISTICS



TECHNICAL INFORMATION



SPARK-LINE-SECONDARY EXTERNAL(2X) FAIT3523B SERIES



FEATURES

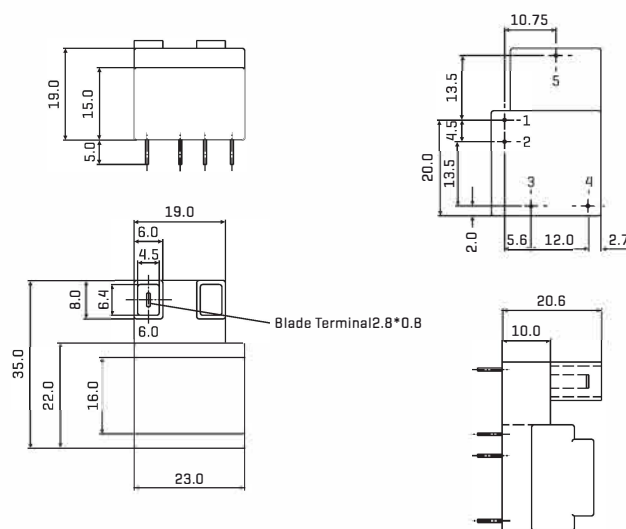
- Compact Design
- Available up to 23kV
- Ambient Temperature 70°C
- Weight: 0.018kg
- Packaging unit: 45 pieces [tray]



ELECTRICAL CHARACTERISTICS AT 25°C

Part Number	Primary Resistance [±10%] [Pin 1-2]	Secondary Resistance [±10%] [Pin 6-7]	Primary Inductance [±15%] [Pin 1-2]	Secondary Inductance [±15%] [Pin 6-7]	Winding Ratio	Secondary Voltage @ load 30pF	Ambient Temperature	No-Load Operation [MAX]
FAIT3523B-200	26mΩ	520Ω	6μH	240mH	1:200	>22kV	70°C	30s
FAIT3523B-175	59mΩ	822Ω	12μH	340mH	1:175	>23kV	70°C	30s

PHYSICAL CHARACTERISTICS



TECHNICAL INFORMATION

